

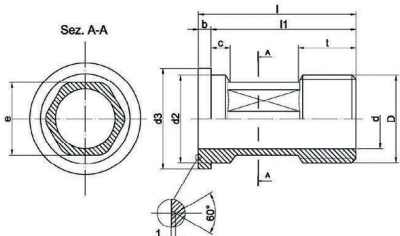
ŚRUBUNKI RAC



Śrubunki do wodomierzy w rozmiarach od DN15 do DN50

KOŃCÓWKI PN16

Wymiary (mm) i waga

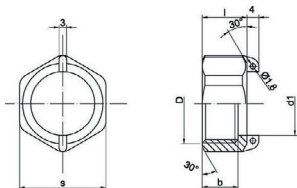


DN	D	t	d	d2	d3	b	l1	l	e	c	Waga (g)
15	½"	13,5	14	20,5	23,5	3	34	37	17	4,5	40
20	¾"	17	20	26	30	3	43	46	23	4	60
25	1"	18,5	25,5	32,5	38	3,5	42,5	46	30	3	110
32	1¼"	21	33	41,7	44	4	52	56	37	4	180
40	1½"	23	38,5	47,6	55	5	61	66	44	6	280
50	2"	29	50	59,4	70,5	7	69	76	55	16	430

Material: Brass CW617N
Gwinty ISO228

NAKRĘTKI PN16

Wymiary (mm) i waga

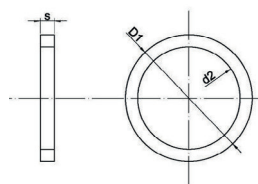


DN	in	D	b	d1	l	s	Waga (g)
15	½"	¾"	12	21,5	15	29	30
20	¾"	1"	14	27	17,5	36	40
25	1"	1¼"	17,5	34,3	21,5	46	100
32	1¼"	1½"	18	42	23	53	130
40	1½"	2"	19,5	49	24,5	66	215
50	2"	2½"	23	60,5	30	84	450

Material: Brass CW617N
Gwinty ISO228

USZCZELKI PN16

Wymiary (mm) i waga



DN	in	d1	d2	s	Waga (g)
15	½"	24	16	3	0,6
20	¾"	30	20	3	1
25	1"	38	25	3	2
32	1¼"	44	33	3	3
40	1½"	55	38	3	6
50	2"	70	50	4	10

Material: EPDM Rubber

wersja_22_05_2025